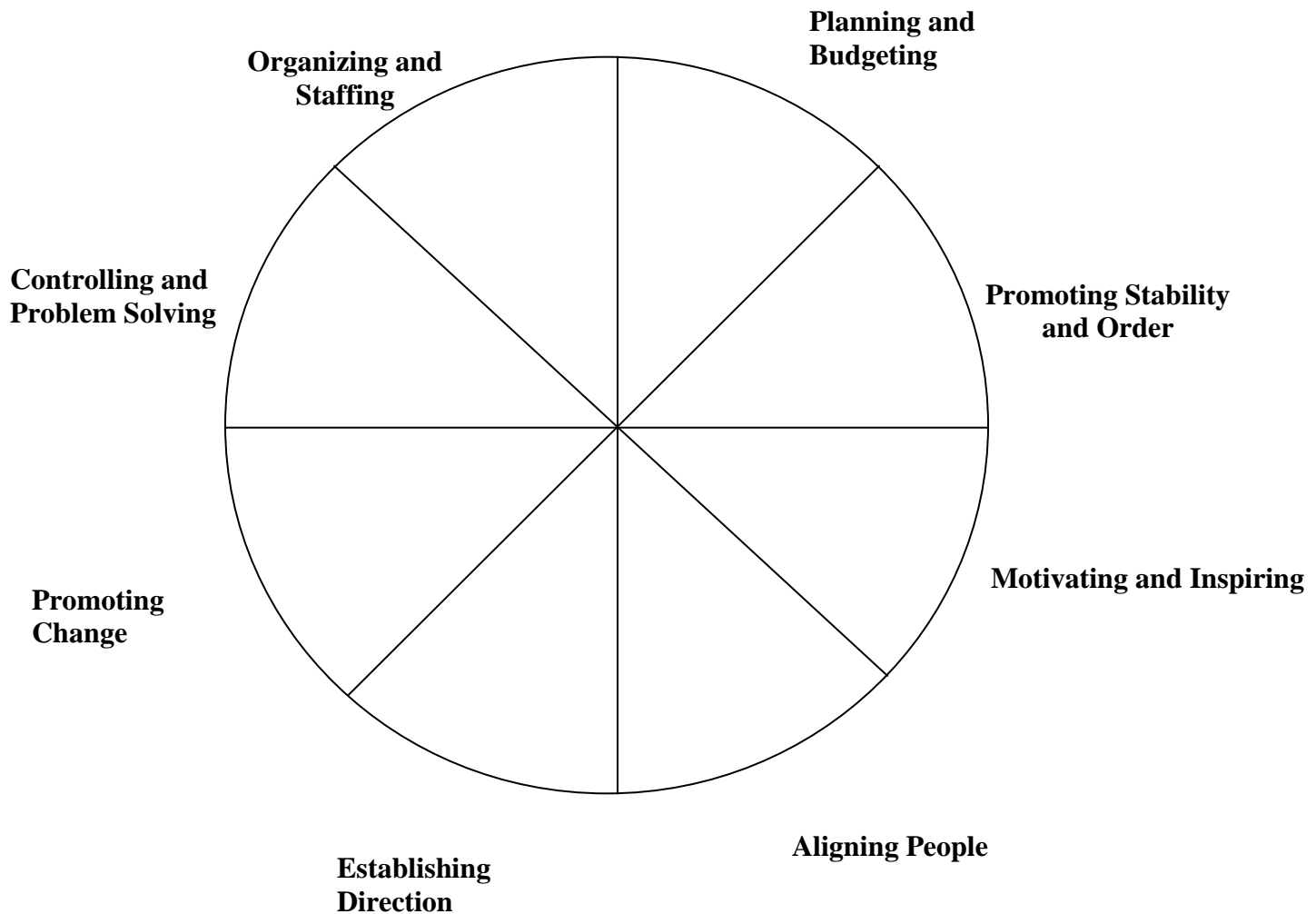




Management/Leadership Wheel

Directions: Score (0 to 10) your satisfaction with your ability in each category. See definitions below.



Planning and Budgeting: establishing detailed steps and timetables for achieving results and then allocating the resources necessary to make it happen.

Establishing Direction: developing a vision of the future, often the distant future, and strategies for producing the changes needed to achieve that vision.

Organizing and Staffing: establishing a structure for accomplishing plan requirements, staffing that structure with people, delegating authority for carrying out the plan, providing policies and procedures to guide people, and creating methods or systems to monitor implementation.

B: 1-604-570-0764

C: 1-360-393-8996

lynne@LivingInVision.com

www.livinginvision.com

Illuminating the path to your greatest future.

Aligning People: communicating the direction by words and deeds to all those whose cooperation may be needed so as to create a team that understands the vision and strategies and accepts their validity.

Controlling and Problem Solving: monitoring results in detail, identifying deviation from the plan, and then organizing to solve these problems.

Motivating and Inspiring; energizing people to overcome major political, bureaucratic, and resource barriers to change by satisfying basic, but often unfulfilled, human needs.

Promoting Change: creating the potential of producing useful change (such as desired new products)

B: 1-604-570-0764

C: 1-360-393-8996

lynne@LivingInVision.com

www.livinginvision.com

Illuminating the path to your greatest future.